

PIKEVIEW QUARRY RECLAMATION

Case Study

PROJECT DETAILS

Project Name	Pikeview Quarry Reclamation
Location	Colorado Springs, Colorado
Date of Installation	Spring 2024
Salesperson	Ryan Anderson
Contractor / Owner	Hydro Turf, Inc. / Castle Aggregates
Application/Solutions	Erosion Control Materials, Soil Amendments & Organic Fertilizers

THE CHALLENGE

After decades of mining operations, the City of Colorado Springs was left with a noticeable mark from the Pikeview Quarry. Known by locals as “The Scar,” Pikeview Quarry ceased operations in 2018 and is now working to turn the scar green. The goal of the reclamation project is to revegetate the Pikeview Quarry scar and restore it with natural vegetation.

In addition to the site having poor, depleted soil that was not suitable for vegetation growth, Castle Aggregates wanted to ensure quick vegetation establishment during a time of year when seeding the side of a mountain was not ideal. There was little room for error and the owners wanted confidence in the result.

THE SOLUTION

The large 125+ acre reclamation project required a mix of products and solutions to restore and stabilize the depleted soil. After collecting soil samples from the jobsite, Bowman worked with the Hydro Turf team to select a variety of erosion control materials as well as seed types, soil amendments and fertilizers that would promote vegetation establishment as fast as possible and support long-term, healthy vegetation.

One of the main erosion control solutions utilized was **Curlex II Fibernet**, an excelsior blanket with a bio-degradable netting



by American Excelsior. Curlex was a critical element of success for the erosion control aspect of the project. Other erosion control products that were used include Profile Products' **ProGanics® DUAL™**, **ProMatrix™**, and **Flexterra®**.

ProGanics DUAL, a Biotic Erosion Control Matrix, ignites the nutrient cycling necessary to improve soil health for sustainable vegetation establishment while also providing the erosion control protection of a BFM, effectively locking down seed and soil. ProMatrix is a very effective BFM and was used to hold the seed, amendments and soil in place underneath the erosion blanket. Flexterra, the highest-performing hydraulic product on the market, is a flexible growth medium and was utilized where it was not practical to install erosion control blanket. A great deal of design and planning went into which products to use in which location based on the necessary performance criteria — no easy task!

Finally, the **Burchland EZR Material Roller** blanket installers were used to assist in efficiently laying the blanket on the ground and the **Staple Wasp** was the tool of choice to install a very large number of staples to hold down the excelsior blanket. This solution of soil amendments, ProMatrix as a glue, and long-lasting bio-degradable excelsior blanket was quite the 1-2-3 punch for erosion control protection.

For vegetation management on the project, the on-site soil contained very little organic material and nutrients. To correct this, products used include Rocky Mountain Bio Products' **Biosol Forte 7-2-1 Organic Fertilizer**, **Earthgreen Menefee Humate®** and **MycoApply® Mycorrhizae**. These soil amendments work together to create a healthy soil, ideal for seed growth. The Biosol and Humate perform several functions. Biosol provides stable organic matter and long-lasting nutrients to support long-term vegetation while building soil structure. Humate adds essential organic acids to increase root cell development and uptake of important minerals while improving the clay soil's water infiltration to assist in plant establishment. Mycorrhizae extends the root system with beneficial fungi to retrieve moisture and bound up nutrients. All components of these additives work together to give the vegetation the best opportunity to succeed, which was a priority.



PRODUCTS USED



ProGanics® DUAL™,
ProMatrix™ Engineered
Fiber Matrix &
Flexterra® HP-FGM®



Biosol Forte 7-2-1 Organic
Fertilizer, Earthgreen
Humate® & MycoApply®
Ultrafine Endo/Ecto Mycorrhizae



Curlex® II
Erosion Control Blanket



EZR Material Roller

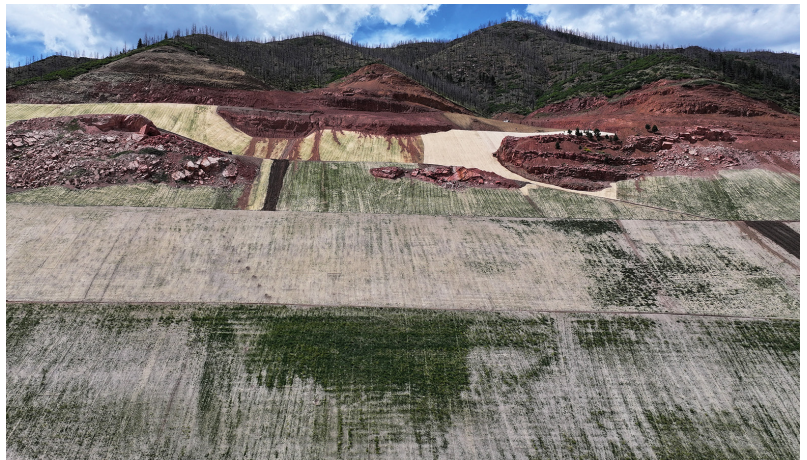
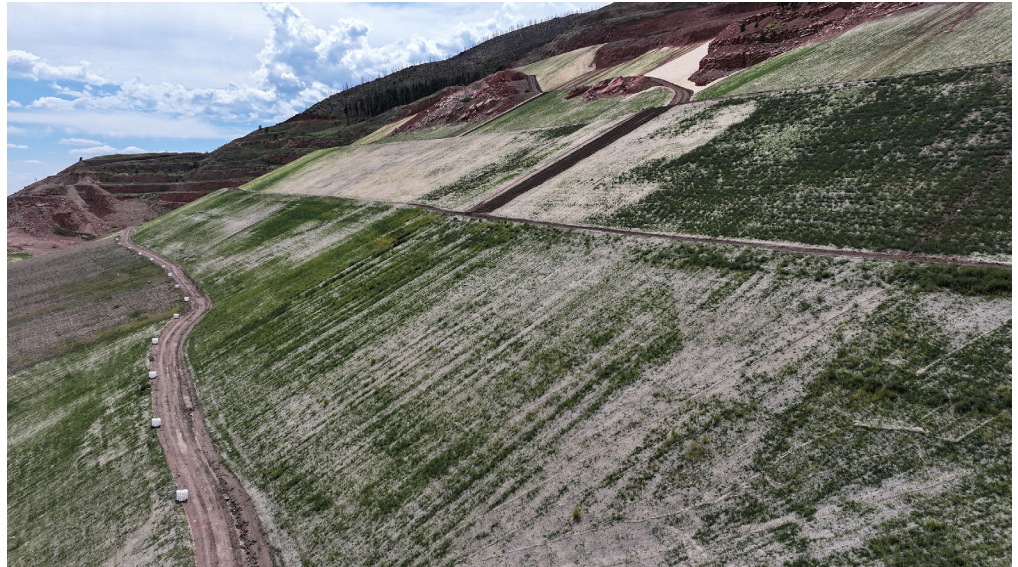


Staple Wasp Gun & Staples

THE RESULTS

The results speak for themselves! As you can see, the vegetation is growing in nicely after just a few months and in the middle of the Colorado summer. The proper planning and material selection for the project helped ensure vegetation growth even in the hottest months of the year.

As the vegetation continues to grow, locals will no longer see a scar, but instead a big green mountainside that the city eventually hopes to turn into a recreational park for the community.



YOUR TRUSTED SITE SOLUTION SPECIALISTS



**Bowman
Construction
Supply Inc.**

303.696.8960 | bowmanconstructionsupply.com
Offices in Denver, Colorado Springs & Loveland
salesbcs@bowmanconstructionsupply.com