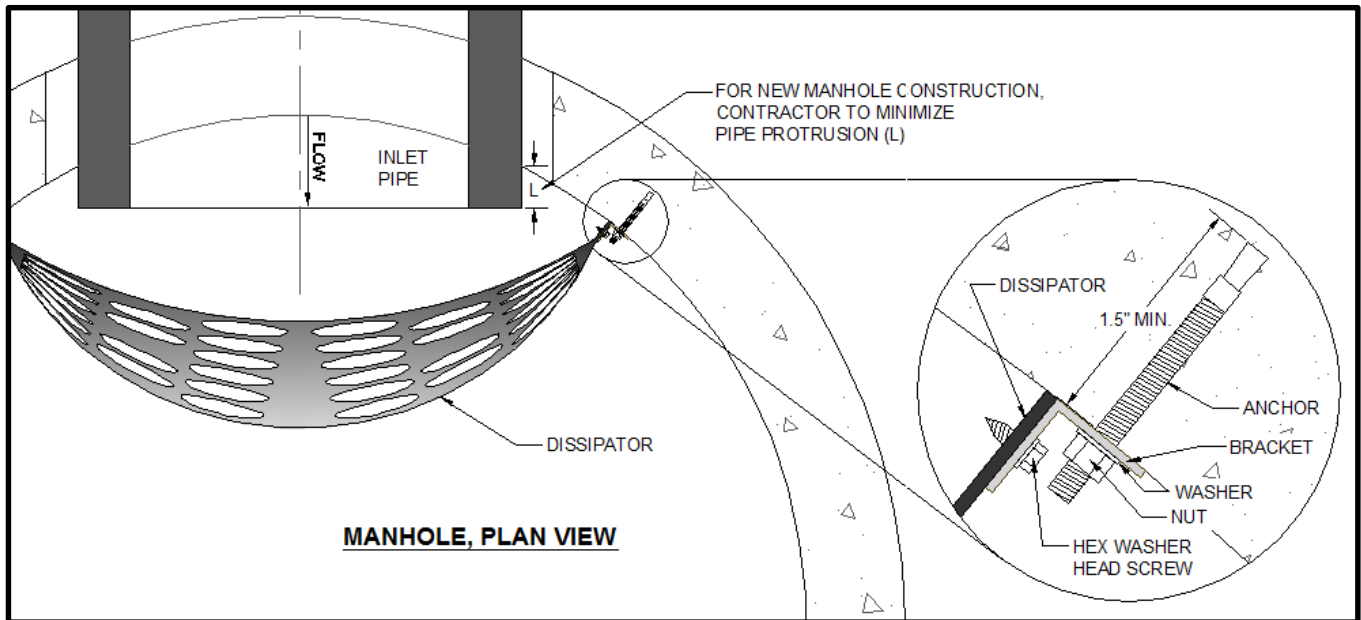




Part # _____

Preserver™ Dissipator Installation Manual

*****NOTE: Installer is responsible for safety requirements and safety equipment as necessary for installation of the Preserver™*****



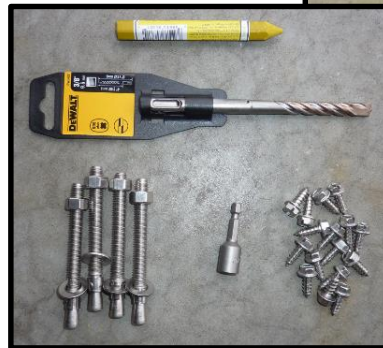
NOTE: Figure above illustrates an installed Preserver™ Dissipator. Installer is recommended to read and understand installation instructions prior to installation, and contact Momentum with any questions. Dissipators installed incorrectly will void the warranty.

Distributed by: Bowman Construction Supply, 10801 E. 54th Avenue, Denver, CO 80239; Phone: (303) 696-8960

1. Confirm Package Contents

The Preserver™ Dissipator will arrive packaged into a single box. Remove all contents and confirm that you have received all materials necessary for installation:

- Marking crayon
- 3/8" concrete drill bit
- 4x 3/8" stainless steel (SS) concrete anchor assembly (extras included)
- 3/8" hex driver bit
- Hex washer head self-tapping SS screws; quantity as listed in the table below (extras included)
- 2x SS mounting brackets
- Preserver™ dissipator (do not remove strapping)



Item	Inlet Pipe Diameter							
	12"	15"	18"	21"	24"	27"	30"	36"
# of Screws	12	12	14	16	16	18	20	24

2. Gather Necessary Tools

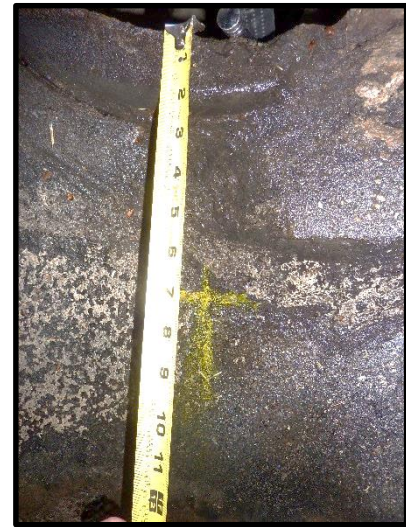
Some tools will need to be provided by the installer. Make sure to check that you have the tools you need prior to beginning the installation:

- Utility knife
- Tape measure
- Torpedo level
- Hammer drill with variable clutch settings (with power source)
- Hammer
- 9/16" wrench/socket (or crescent wrench)



3. Install Mounting Brackets

- A. Locate the inlet to the manhole. If multiple inlets exist, **double-check that you have the correct dissipator and brackets for each inlet (per pipe dia.)**.
- B. Use your tape measure to measure down from the pipe invert according to the table below and mark the center mark on the manhole wall. Mark vertically & horizontally.



Item	Inlet Pipe Diameter							
	12"	15"	18"	21"	24"	27"	30"	36"
Measure Down	9"	7.5"	7.5"	9.5"	9"	10.5"	11.5"	13.5"

- C. Mark the distance listed in the table below in both directions from the center mark (bracket marks). Mark vertically and horizontally.
- D. **Double-check that the center mark is centered on the pipe, that all measurements are correct, and that the bracket marks are level with the center mark measure down.**



PRESERVER	MH Dia.	Inlet Pipe Diameter							
		12"	15"	18"	21"	24"	27"	30"	36"
Center Offset	4'	13.5"	16"	18"	20"	22"	24"	26.5"	30"
	5'	13"	16"	18"	20"	22"	24"	26"	30"
	6'	12.5"	15.5"	17.5"	19.5"	21.5"	23.5"	25.5"	29.5"
	7'	12"	15"	17"	19"	21"	23"	25"	29"
	8'	12"	14.5"	16.5"	18.5"	20.5"	22.5"	24.5"	28.5"
	9'	12"	14"	16"	18.5"	20"	22"	24"	28"
	10'	12"	13.5"	16"	18"	19.5"	21.5"	23.5"	27.5"
	12'	12"	13.5"	15.5"	17.5"	19.5"	21"	23"	27"
	Flat Wall	11"	13.5"	15.5"	17.5"	19"	20.5"	22.5"	26"

Install Mounting Brackets (continued)

- E. The brackets will come strapped to the dissipator. **Do not cut the straps prior to lowering the dissipator and brackets into the manhole.** Once lowered into the manhole, the strapping can be cut from the dissipator and brackets.
- F. Line up the inside (bend side) bottom corner of the bracket with the bracket mark you made in the Step C (bracket bend faces towards the pipe). Level the bracket and mark the center of the anchor connection slots.



- G. Multiple anchor slots are included on each bracket to give the installer options to work around obstructions (e.g. rebar, joint, lift hole). **At a minimum, one anchor must be attached at the top and bottom halves of each bracket, and holes must be a minimum of 1.5" deep.** Select the desired anchor locations and use a 3/8" concrete drill bit with your drill to make 3" deep holes.



Install Mounting Brackets (continued)

- H. Clean the holes out of any dust and debris and put the bracket back into position. Place anchor assemblies into the holes and unscrew the nuts until they are flush with the ends of the anchors. Use your hammer as necessary to **tap** each anchor into the holes, leaving a minimum of 1" of thread exposed.
- I. Adjust the bracket up or down as necessary to line up with the bracket mark. Tighten the bolts to 25 ft-lbs of torque, or 3-5 turns past the hand tight position.
- J. Repeat steps 3F through 3I to secure the bracket on the other side of the inlet pipe.

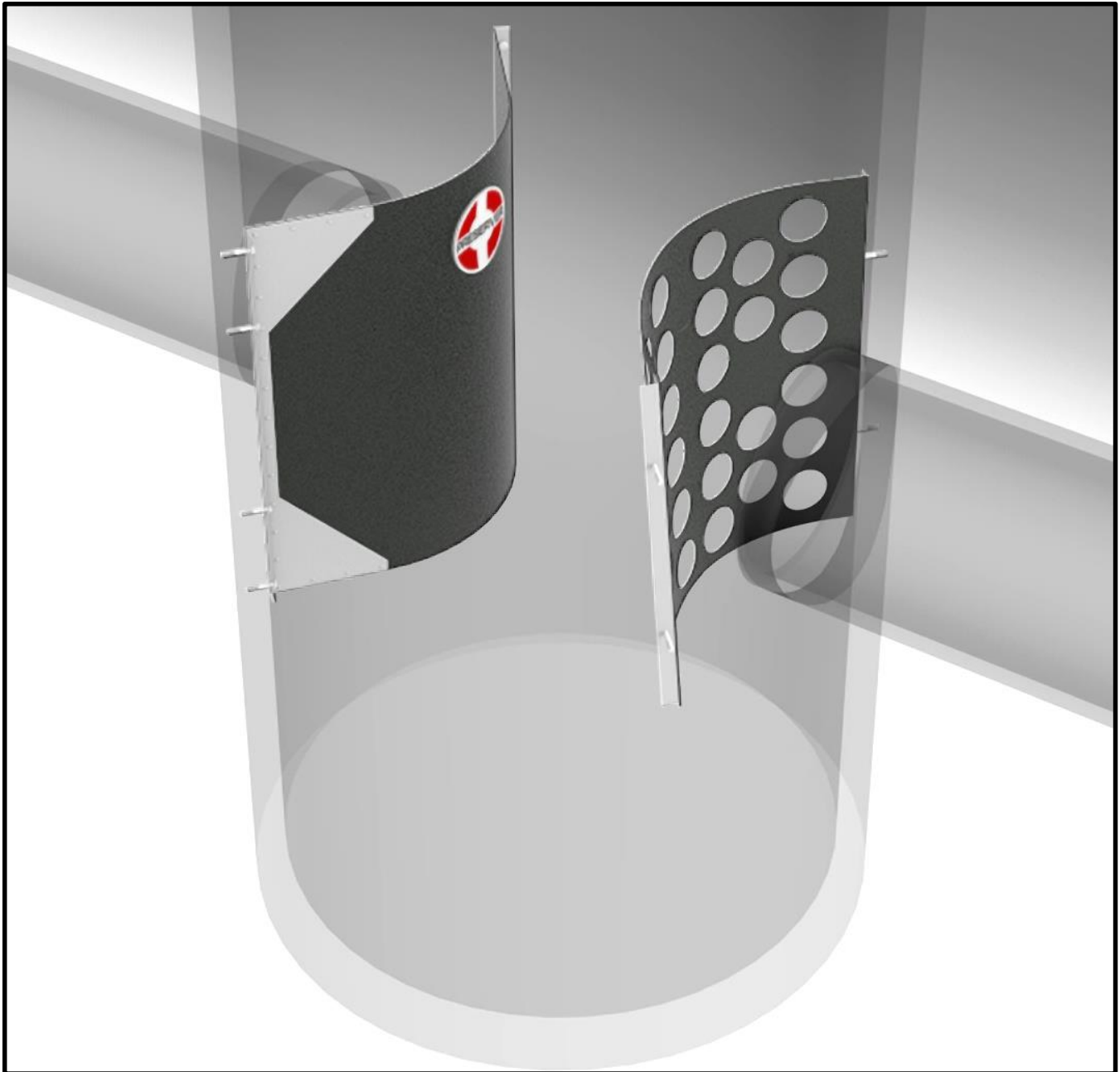


NOTE: If an anchor installation is inadequate, it must be replaced or an additional anchor(s) must be installed on that bracket half.

4. Install Preserver™ Dissipator

- A. The dissipator will be mounted to the brackets using stainless steel self-tapping screws and a 3/8" hex driver bit. Secure the driver bit into your drill and **set the drill's variable clutch to the lowest torque setting to prevent stripping.**
- B. The dissipator is connected to the inside (pipe side) of the bracket. Line up the bottom of the dissipator with the bottom of the mounting brackets.
- C. Secure the dissipator using the screws, 3/8" socket bit, and your drill. Note that the bottom of the dissipator will typically be relatively tight, this is normal and by design. Pushing the bottom of the dissipator inwards will help to line up the second side for attachment.





Installation of your Preserver™ is now complete!

Please don't hesitate to contact us should you have questions regarding installation of the Preserver™.

Distributed by: Bowman Construction Supply, 10801 E. 54th Avenue, Denver, CO 80239; Phone: (303) 696-8960