

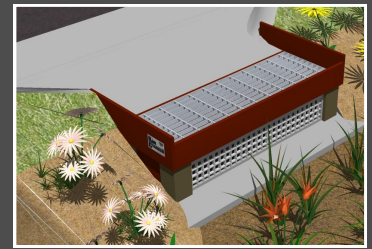


PRETREATMENT FOR BIORETENTION

Rain Gardens • Swales • Filtration Basins • Infiltration Basins



COMMERCIAL/INDUSTRIAL



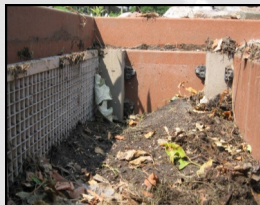
RESIDENTIAL



Maximize Capacity & Extend Effective Life

- Grate/filter/chamber combination captures sediment and debris
- Overflow points prevent inlet debris from causing bypass before bioretention reaches capacity

"A Rain Guardian is a must for any rain garden."
- Steve M.,
St. Paul, MN



Simplify Maintenance

- Sediment and debris removed from chamber with shovel
- Drop-in filter cleaned with broom or hose

"The Rain Guardians provide very effective pretreatment along with efficient, simplified maintenance."
- Noah Czech,
City of St. Cloud, MN



Easy Installation

- Placement and securing take only minutes
- New construction or retrofits

"It's amazing, with just a 0.5" rain event each Rain Guardian captured two 5 gallon buckets full of sediment. Maintenance is simple and can be accomplished in only minutes..."
- Brian Sanoski,
Wright SWCD

Rain Guardian—Turret

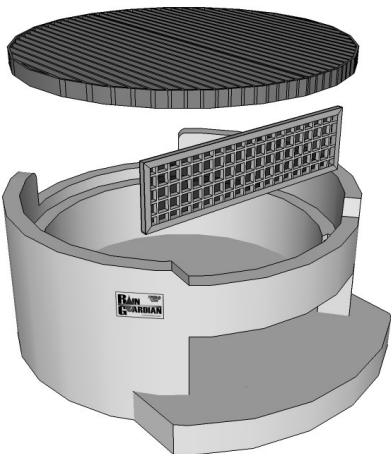
Standard exterior dimensions:

44" x 49" base, 19.5" total height

Turret prices:

Light-Duty Rated (541 lb. concentrated load)—Contact ACD

Heavy-Duty Rated (2,456 lb. concentrated load)—Contact ACD



Galvanized steel grate (2-piece)

Anodized aluminum filter frame and fiberglass filter grid

Steel reinforced monolithic concrete riser and base (1,030 lbs.)

Manufactured by: Cretex
Concrete Products

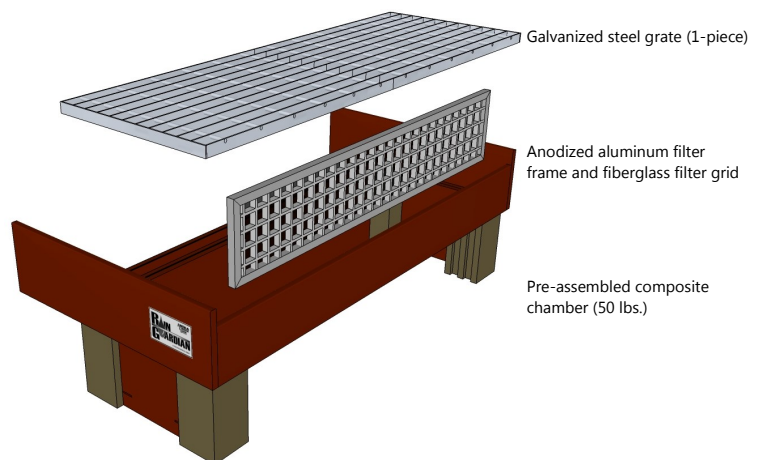
Rain Guardian—Bunker

Standard exterior dimensions:

50"L x 25.5"W x 15.5"H

Bunker price:

Light-Duty Rated (316 lb. concentrated load)—Contact ACD



Galvanized steel grate (1-piece)

Anodized aluminum filter frame and fiberglass filter grid

Pre-assembled composite chamber (50 lbs.)

www.RainGuardian.biz

Distributed by: Bowman Construction Supply,
10801 E. 54th Avenue, Denver, CO 80239; Phone:
(303) 696-8960



1318 McKay Dr. NE, Suite 300
Ham Lake, MN 55304
(763) 434-2030 (M-F 8:00-4:30)